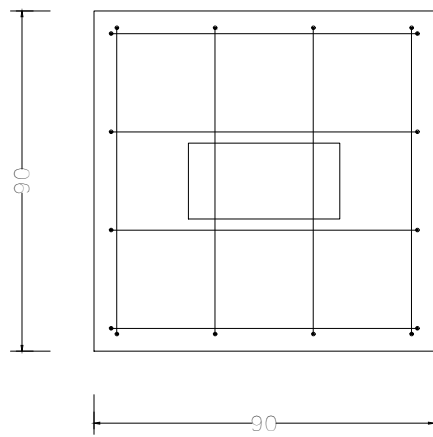
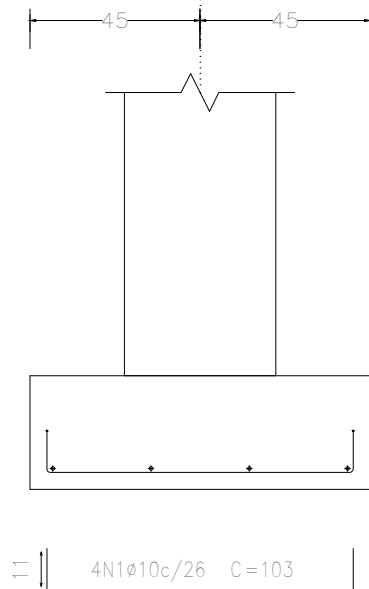
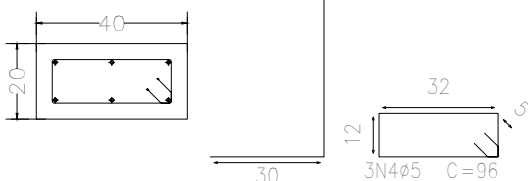
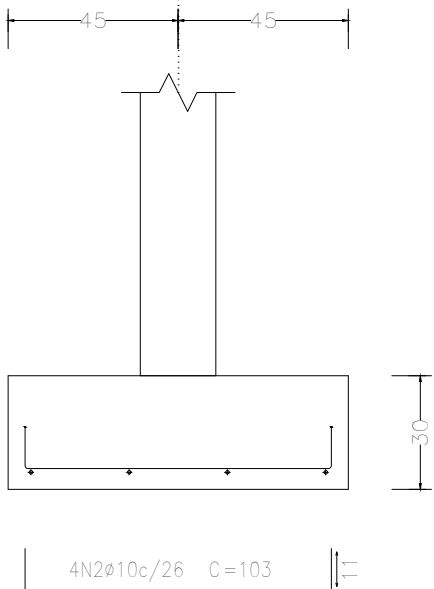


P10, P11, P17, P18, P27, P28, P32, P33, P45, P46, P47, P48, P49, P52, P53, P54, P55, P58, P66 e P67

P10, P11, P17, P18, P27, P28, P32, P33, P45, P46, P47, P48, P49, P52, P53, P54, P55, P58, P66 e P67



P10, P11, P17, P18, P27, P28, P32, P33, P45, P46, P47, P48, P49, P52, P53, P54, P55, P58, P66 e P67

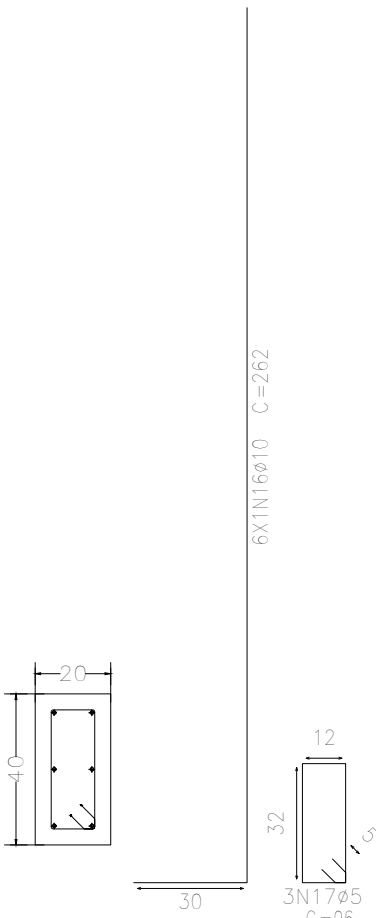
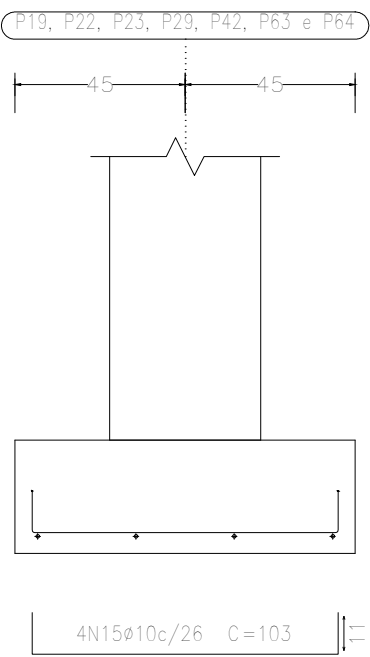
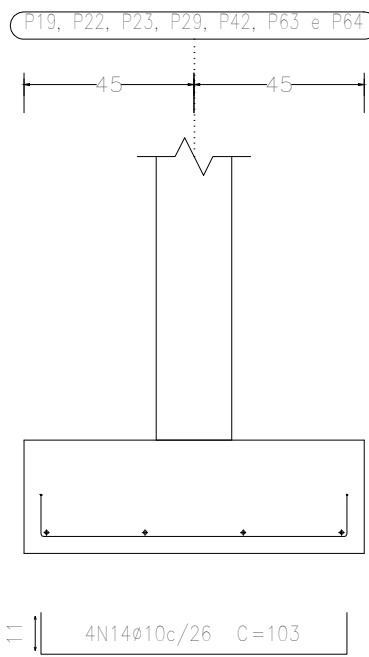


P10, P11, P17, P18, P27, P28, P32, P33, P45, P46, P47, P48, P49, P52, P53, P54, P55, P58, P66 e P67

Elemento	Pos.	Diam.	Q.	Dob. (cm)	Reta (cm)	Dob. (cm)	Comp. (cm)	Total (cm)	CA-50 (kg)	CA-60 (kg)
P10=P11=P17=P18 P27=P28=P32=P33 P45=P46=P47=P48 P49=P52=P53=P54 P55=P58=P66=P67	1 2 3 4	ø10 ø10 ø10 ø5	4 4 6 3	11 11 30 96	81 81 220 96	11 11 96 96	103 103 250 96	412 412 1500 288	2,5 2,5 9,2 288	0,5
Total+10% (x20)									15,6 312,0	0,6 12,0
P12=P13=P14	5 6 7 8	ø10 ø10 ø10 ø5	4 4 8 3	11 11 30 96	81 81 217 96	11 11 96 96	103 103 247 96	412 412 1976 288	2,5 2,5 12,2 288	0,5
Total+10% (x3)									18,9 56,7	0,6 1,8
P15=P16	9 10 11 12 13	ø10 ø10 ø10 ø12,5 ø6,3	4 4 2 4 3	11 11 30 30 98	81 81 214 226 98	11 11 96 96 98	103 103 244 256 98	412 412 488 1024 294	2,5 2,5 3,0 9,9 0,7	
Total+10% (x2)									20,5 41,0	
P19=P22=P23=P29 P42=P63=P64	14 15 16 17	ø10 ø10 ø10 ø5	4 4 6 3	11 11 30 96	81 81 232 96	11 11 96 96	103 103 262 96	412 412 1572 288	2,5 2,5 9,7 288	0,5
Total+10% (x7)									16,2 113,4	0,6 4,2
									ø5: ø6,3: ø10: ø12,5: Total:	18,0 1,6 499,7 21,8 523,1

P19, P22, P23, P29, P42, P63 e P64

P19, P22, P23, P29, P42, P63 e P64

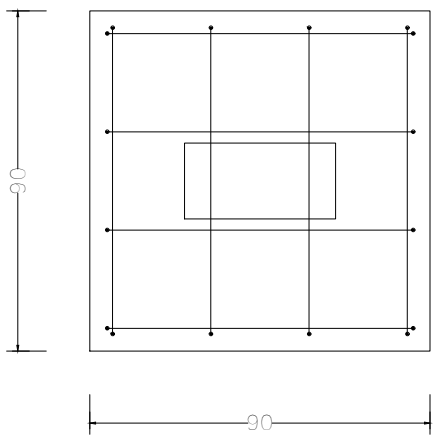
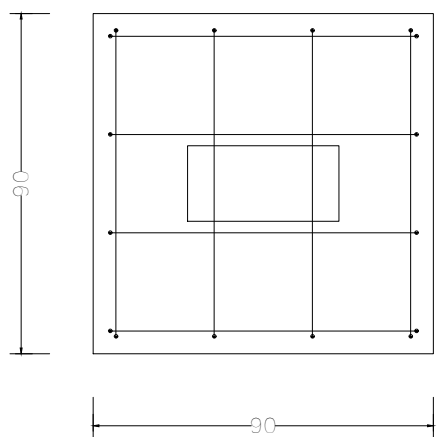
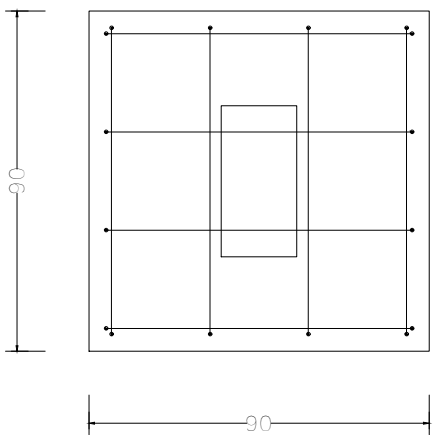
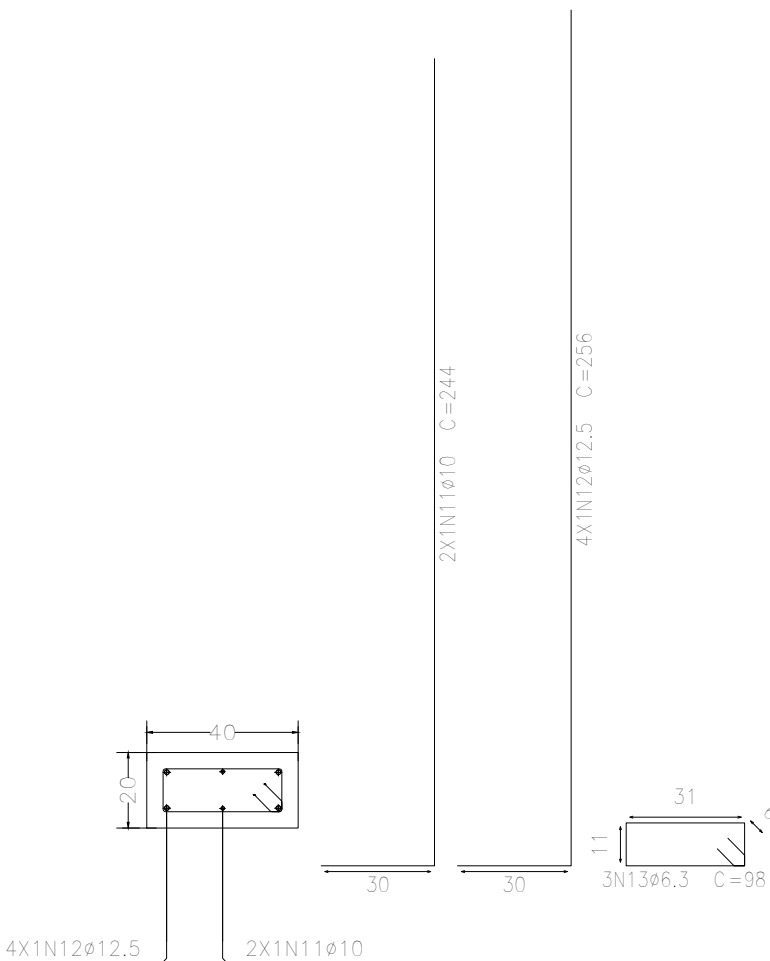
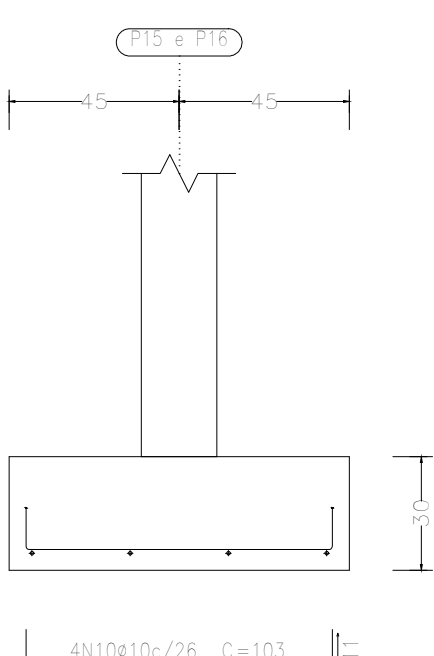
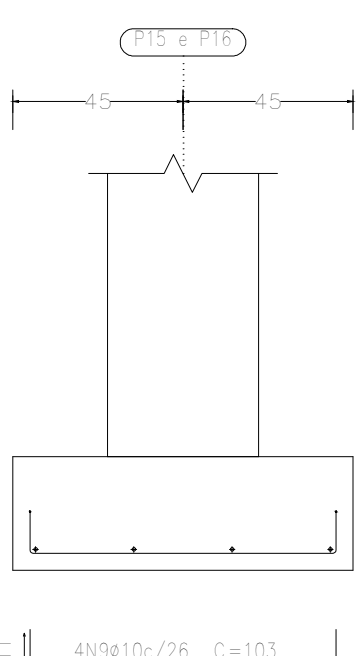
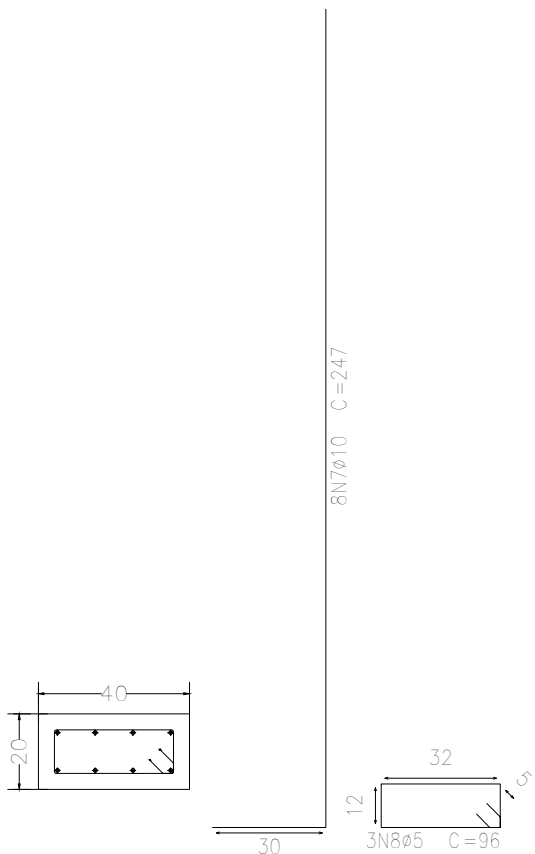
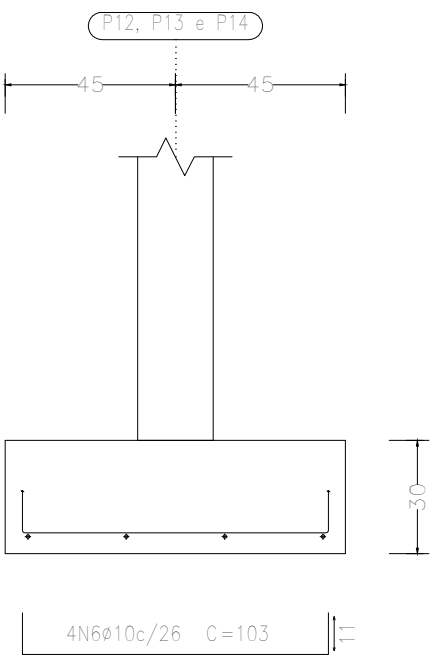
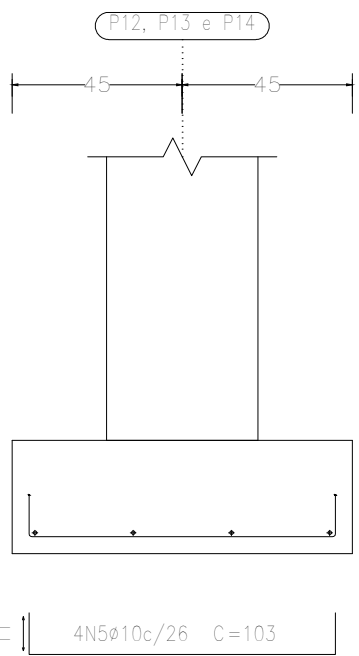



P12, P13 e P14

P15 e P16

P12, P13 e P14

P15 e P16



		PREFEITURA MUNICIPAL DE CAMPOS DE JÚLIO DEPARTAMENTO DE ENGENHARIA Avenida Valdir Masutti, nº 1999, Bom Jardim - Campos de Júlio Fone:0xx65-3387-2800	
Obra:		Área Total: 1260,00 m² Área Coberta: 722,26 m² Área Permeável: 537,74 m²	
Centro de Convivência dos Idosos		Resp. Técnico:	
Prefeitura Municipal de Campos de Júlio		EDUARDO RAMPANELLI TOSETTO CREA - 1228953037	
Local: CCI - Centro de Convivência dos Idosos		Escala:	
Conteúdo: Projeto Estrutural		Indicadas	
Data: 04/04/2023		Folha: 02/19	